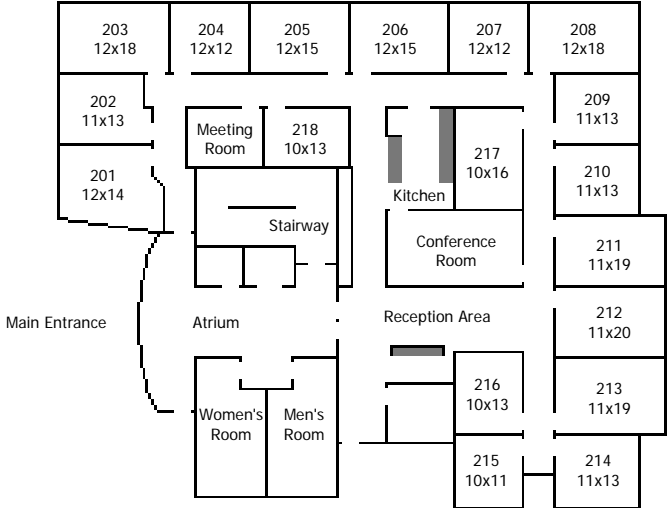


Deer Creek Woods

7381 W. 133rd Street | Overland Park, KS 66213 | (913) 956-6600



Select from 19 full-service suites at our new office in Deer Creek Woods. Deer Creek Woods is a 56 acre mixed-use development located at the intersection of 135th Street and Metcalf in the heart of Johnson County. Deer Creek Woods contains 185,000 sf of retail shops and services and 4 Class A office buildings. Located within easy walking distance is one of the areas top public golf courses, a 22 mile paved jogging and biking trail, a new Lifestyle mall, a fitness center and a grocery store.



Executive Suites & Services

For more information call (913) 956-6600 or visit our web site at www.suitesandservices.com